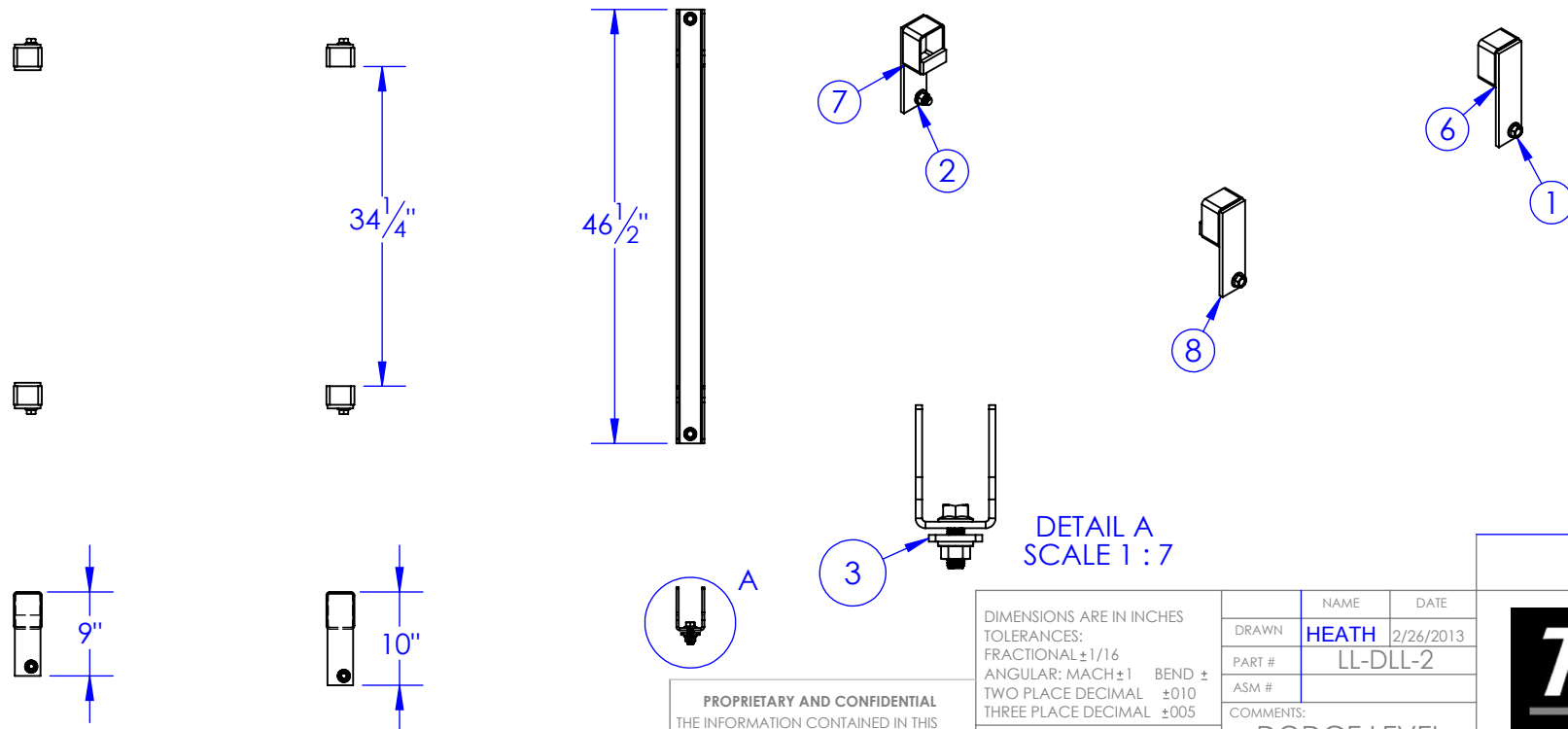


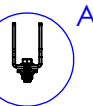
ITEM NO.	PART NUMBER	DESCRIPTION	DRAWING #	QTY.
1	BO-5/8x1-3/4 FLHCS	FLANGE HEAD BOLT 5/8x1-3/4"	STOCK	6
2	BO-5/8 HNN	LOCK NUT 5/8	STOCK	6
3	FP-CLL2-7	LEVEL LOCK, FRONT REINFORCING PLATE	90-2805	2
4	FP-DLL2-FRONT	FRONT CROSS MEMBER, DLL-2	90-1822-21	1
5	FP-DLL2-2 DS	CENTER BRKT, DLL-2, WLDMT DRIVER SIDE	90-1822-24	1
6	FP-DLL2-2 PS	CENTER BRKT, DLL-2, WLDMT PASSENGER SIDE	90-1822-24	1
7	FP-DLL2-3 DS	REAR BRKT, DLL-2, WLDMT DRIVER SIDE	90-1822-28	1
8	FP-DLL2-3 PS	REAR BRKT, DLL-2, WLDMT PASSENGER SIDE	90-1822-28	1

REVISIONS			
REV.	DESCRIPTION	DATE	APPROVED
A	REVISED TO NEW DWG FROM 10-1826 B	1/23/2013	

DODGE LEVEL LOK 1994-2002 40" & 56" CAB TO AXLE SINGLE / DUAL WHEEL



**DETAIL A
SCALE 1 : 7**



PROPRIETARY AND CONFIDENTIAL
THE INFORMATION CONTAINED IN THIS
DRAWING IS THE SOLE PROPERTY OF TRIPLE
C INC. ANY REPRODUCTION IN PART OR
AS A WHOLE WITHOUT THE WRITTEN
PERMISSION OF TRIPLE C INC. IS PROHIBITED.

DIMENSIONS ARE IN INCHES TOLERANCES: FRACTIONAL $\pm 1/16$ ANGULAR: MACH ± 1 BEND \pm TWO PLACE DECIMAL ± 010 THREE PLACE DECIMAL ± 005	
MATERIAL	--
DO NOT SCALE DRAWING	

NAME	DATE
DRAWN HEATH	2/26/2013
PART #	LL-DLL-2
ASM #	
COMMENTS: DODGE LEVEL LOK 1994-2002 40 & 56" C/A	

P.O. BOX 248,
SABETHA, KS 66534



SIZE A	DWG. NO. 90-1822	REV. A
SCALE: 1:20	WEIGHT: 39.01	SHEET 1 OF 1

GENERAL INSTRUCTIONS AND CAUTIONS

Note: When welding, attach welder ground only to Hydra-Bed, not to truck frame. Use low-hydrogen rod or wire electrode. NEVER weld to the frame of the truck. Correct installation of the Level-Lok system assures Front to Rear and Side to Side leveling as well as Left to Right centering of the Hydra-Bed. Never obstruct factory overload spring mounting locations.

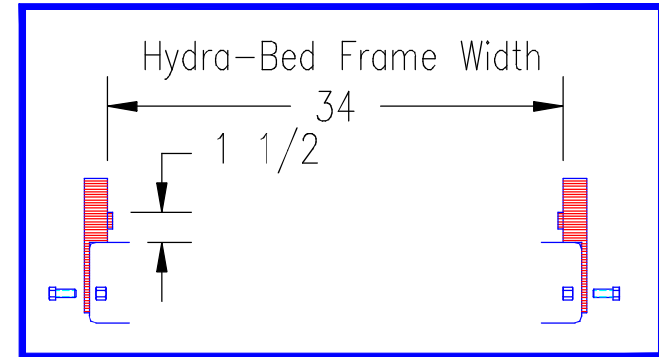
When drilling truck frame, do not damage any part of the braking, fuel or electrical systems.

Bolt 2 1/2x1 1/2x46 1/2" tube to factory frame risers using 1/4x2x3 1/4 reinforcing plates. Center Hydra-Bed between the tube risers. Weld Hydra-Bed to tube risers. Hydra-Bed frame will be resting on the tube and between risers.

Locate center DLL-2 over 1/4" pilot hole. Drill hole to 5/8".

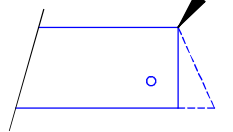
Locate rear DLL-2 over 1/2" pilot hole approx 2 3/8" from rear of frame. Drill hole to 5/8".

VIEW OF REAR LEVEL-LOKS ON TRUCK FRAME



REINFORCING PLATE

Cut frame off square at this point.



DLL-2

1994-2002 Dodge
56" Cab to Axle Single/Dual Wheel